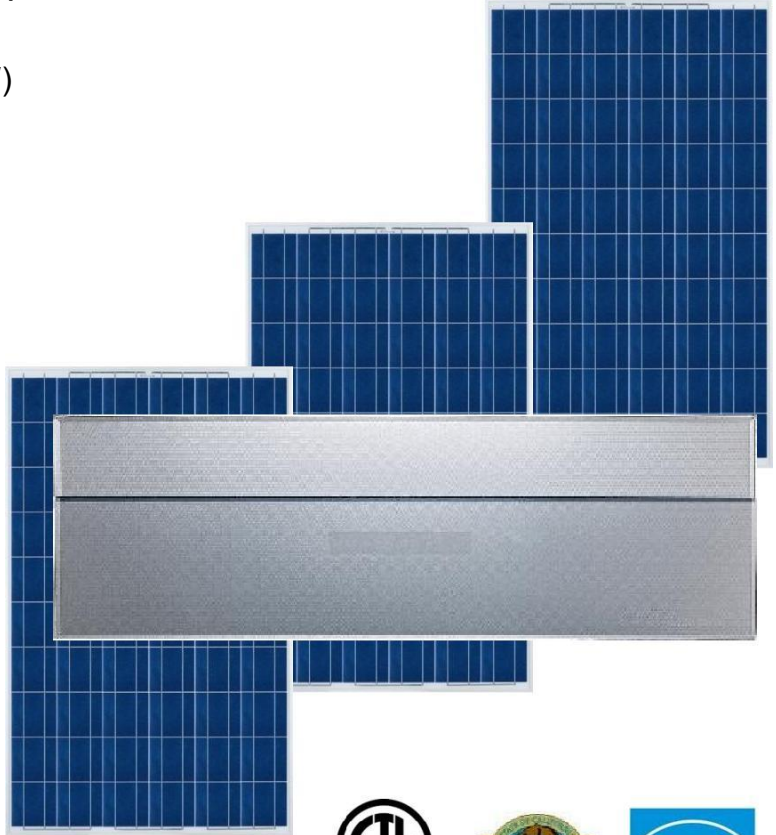


# Solar Air Conditioner

www.geinnovations.net  
sales@geinnovations.net

SEER 35\* Solar Hybrid Heat Pump  
Model GEI-HY-12 H/C

Connect Up To Three Panels (Max 750W)  
Runs On Solar Power & AC Power  
11,000 BTU Cooling/12,000 BTU Heat  
Plug-And-Play Solar Connection  
No Batteries Required



## Home

Keep the inside cool all day for next to nothing in energy costs. Preventing daytime heat build-up also cuts evening cooling costs.

## Office

Keep the work area comfortable during business hours for pennies per day. Cool or heat up to 750 Sq. Ft. (75m<sup>2</sup>).

## International

Compatible with 50hz and 60hz power, use it anywhere in the world.

## Ultra-High SEER Solar Air Conditioner

Your air conditioner needs the most power when the sun is shining, a coincidence you can take advantage of with our ACDC12 solar air conditioner. It can keep an indoor area cool during the day for pennies. Literally, pennies, operating above **SEER 35** with only two solar panels connected. Use this system to cool a small area or to augment a larger system.

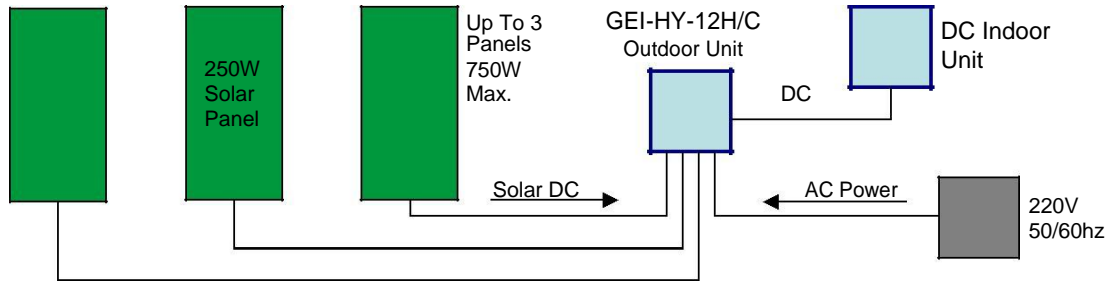
The unit uses solar energy up to 750w, and adds in utility power, with no need for batteries. Even when the sun is not shining at all, this ultra high-efficiency (SEER >19 without solar) heat pump will keep you comfortable and save you money using far less electricity than a normal AC or heat pump unit of the same capacity.



### Simple To Install

This unit installs exactly like a normal mini-split air conditioner. Standard MC4 solar connectors and cabling can be used to connect the solar panels directly to the AC unit.

## Connects Directly To Solar Panels



Like all DC-Inverter air conditioners, the ACDC12 compressor runs on DC power converted from AC power. But this special solar air conditioner can also accept DC power directly from solar panels, without needing an inverter, controller, or batteries. The solar DC power directly replaces an equivalent amount of AC power from the power company and can cut daytime energy costs for air conditioning or heating by 80% or more.

During the day, the ACDC12 can get most of its power from solar resulting in an efficiency above SEER 35 when using two 230W solar panels. The unit can be connected with up to three 250W panels up to 750 total Watts. The system is designed for hybrid operation with solar providing most of the energy needed during daylight hours. This air conditioner must be connected to a 220VAC power source and is not designed for off-grid operation.

### ACDC12 Solar AC Specifications

Power AC	208/220V, 50/60Hz	Solar Power Input (Max.)	<math>\leq 780W</math>
Power DC	30-39 VDC	Solar Power Input (Max.)	<math>\leq 20a</math>
Cooling Capacity	11000 Btu/h	Operating Range (cooling/heating)	20F-122F/5F-90F
Power Input @ Full Cooling Operation	920W	Outdoor Noise Level	55 db
Avg. Power Consumption, Cooling	705W	Outdoor Fan Motor	Panasonic DC
Cooling COP	3.5	Outdoor Fan Input	35W DC
SEER	>19 / 35	Outdoor Air Flow	1295 CFM
Heating Capacity	12000 Btu/h	Outdoor Unit Dimension (W*D*H)	30" x 11.2" x 23.2"
Power Input @ Full Heating Operation	1025W	Compressor	BLDC DC Inverter (Rotary)
Avg. Power Consumption, Heating	836	Refrigerant	R410A / 46oz.
Heating COP	3.5	Max. Lineset Length /Elevation	65 ft. / 26 ft.
HSPF	10.1	Moisture Removal	.25 G/h
Indoor Fan Motor	Panasonic DC	Rated Current (RLA)	5.3A
Indoor Fan Input	20W DC	Locked Rotor Amp (LRA)	10A
Indoor Fan RPM (Hi/Med/Lo)	1250/900/700	Refrigerant Oil	VG74 / 17 oz.
Indoor Air Flow (Hi/Med/Lo)	412/295/235 CFM	Design Pressure	550/340 PSIG
Indoor Noise Level (Hi/Med/Lo)	39/29/26 dB	Liquid side/ Gas side	1/4" / 1/2"
Indoor Unit Dimensions (W*D*H)	35.5" x 6.5" x 11.2"	DC Connection / Wire	MC4 / AWG 10/12